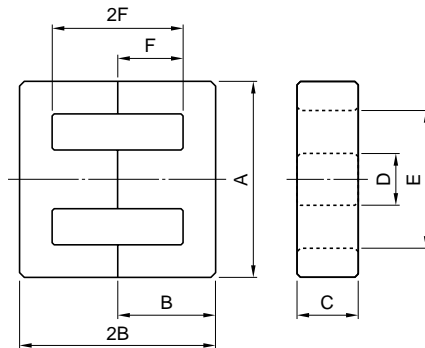


## 形状・寸法／特性

Shapes and dimensions/Characteristics



形状 Type	寸法 Dimensions(mm)								Bobbin
	A	2B	B	C	D	E min.	2F min.	F	
EE-8.3	8.30±0.30, -0.20	8.00	4.00±0.10	3.60±0.20	1.80±0.20	6.10	5.80	3.00±0.10	
EE-10.2	10.2±0.3, -0.2	11.0	5.50±0.15	4.70±0.20	2.40±0.20	7.60	8.10	4.20±0.15	
EE-12.5	12.5±0.3	14.8	7.40±0.20	5.00±0.20	2.40±0.20	9.00	9.80	5.10±0.20	
EE-12.5T	12.5±0.3	8.9	4.45±0.20	5.00±0.20	2.40±0.20	9.00	4.70	2.55±0.20	
EE-13D	13.0±0.2	12.0	6.00±0.15	6.15±0.15	2.75±0.15	10.0	9.00	4.60±0.10	
EE-14L	14.0±0.3	26.0	13.0±0.20	3.75±0.15	4.50±0.20	9.7	19.4	9.80±0.10	
EE-16A	16.0±0.3	14.4	7.20±0.20	4.80±0.20	4.00±0.20	11.7	10.0	5.20±0.20	
EE-16B	16.0±0.3	24.4	12.2±0.2	4.80±0.20	4.00±0.20	11.7	20.0	10.2±0.2	
EE-16K	16.0±0.3	14.3	7.15±0.30	6.80±0.20	3.20±0.15, -0.20	12.5	10.8	5.50±0.10	
EE-16L	16.0±0.3	24.9	12.45±0.15	1.92±0.08	5.85±0.15	10.0	18.9	9.58±0.12	
EE-19A	19.0±0.4, -0.3	16.0	8.00±0.20	5.00±0.20	4.50±0.20	14.2	10.8	5.60±0.20	
EE-19B	19.0±0.4, -0.3	26.8	13.4±0.3	5.00±0.20	4.50±0.20	14.2	21.4	11.0±0.3	
EE-19K	19.15±0.5	15.8	7.90±0.25	9.58±0.18	4.65±0.15	14.5	10.9	5.60±0.15	
EE-20K	20.0±0.3	27.1	13.55±0.25	5.00±0.20	4.55±0.15	14.3	22.0	11.15±0.15	
EE-20L	20.0±0.3	27.8	13.9±0.25	5.00±0.20	4.55±0.15	14.3	22.7	11.5±0.15	
EE-20N	20.0±0.4	19.9	9.95±0.20	5.65±0.25	5.70±0.20	14.1	14.0	7.20±0.20	
EE-22A	22.0±0.5, -0.4	18.8	9.40±0.20	5.80±0.30	5.80±0.30	15.6	10.4	5.40±0.20	
EE-22B	22.0±0.5, -0.4	29.2	14.6±0.3	5.80±0.30	5.80±0.30	15.6	20.6	10.6±0.3	
EE-22E	22.0±0.5	30.6	15.3±0.2	5.60±0.20	5.60±0.20	15.5	22.2	11.3±0.2	
EE-22K	22.0±0.3	29.3	14.65±0.25	5.75±0.25	5.75±0.25	16.0	21.2	10.8±0.2	
EE-25S	25.0±0.5	20.3	10.15±0.15	6.40±0.20	6.40±0.25	18.6	13.2	6.75±0.15	
EE-25D	25.3±0.5	31.1	15.55±0.25	6.75±0.25	6.50±0.30	19.0	24.2	12.35±0.25	
EE-25K	25.4±0.5	18.9	9.46±0.19	6.29±0.19	6.35±0.25	18.6	12.4	6.41±0.19	
EE-25M	25.0±0.8, -0.7	25.1	12.55±0.25	7.20±0.30	7.25±0.25	17.5	17.4	8.95±0.25	
EE-25.4A	25.4±0.5, -0.4	19.0	9.50±0.20	6.35±0.30	6.35±0.30	18.6	12.4	6.40±0.20	
EE-25.4B	25.4±0.5, -0.4	32.0	16.0±0.3	6.35±0.30	6.35±0.30	18.6	25.2	12.9±0.3	
EE-27K	27.0±0.4	34.6	17.3±0.2	8.50±0.20	8.00±0.20	18.6	26.3	13.3±0.15	
EE-28S	28.0±0.4	21.0	10.5±0.2	10.7±0.25	7.20±0.25	18.6	12.0	6.20±0.20	
EE-28R	28.0±0.5	25.5	12.75±0.15	10.6±0.2	7.20±0.30	18.4	16.3	8.25±0.10	
EE-28	28.0±0.6, -0.5	33.6	16.8±0.3	10.7±0.3	7.20±0.30	18.5	24.0	12.3±0.3	
EE-30A	30.0±0.5	26.4	13.2±0.3	10.7±0.3	10.7±0.3	19.5	15.8	8.20±0.30	
EE-30L	30.0±0.5	30.0	15.0±0.2	7.10±0.20	6.90±0.30	19.5	19.4	9.95±0.25	
EE-30B	30.0±0.7, -0.5	42.6	21.3±0.3	10.7±0.3	10.7±0.3	19.5	32.0	16.3±0.3	
EE-33A	33.0±0.6, -0.5	27.6	13.8±0.3	12.7±0.3	9.70±0.30	23.1	18.0	9.30±0.30	
EE-33K	33.0±0.7	28.3	14.15±0.2	12.7±0.3	9.70±0.30	23.5	18.9	9.65±0.20	
EE-33B	33.0±0.5	46.6	23.3±0.3	12.7±0.3	9.70±0.30	23.1	37.6	19.1±0.3	
EE-34.3M	34.32±0.69	28.24	14.12±0.13	9.32±0.18	9.32±0.18	25.53	19.16	9.78±0.20	
EE-35K	35.0±0.5	30.2	15.1±0.2	11.75±0.3	10.0±0.3	24.5	17.8	9.10±0.20	
EE-35A	35.0±0.7, -0.5	31.0	15.5±0.3	10.0±0.3	10.0±0.3	24.5	18.4	9.50±0.30	
EE-35B	35.0±0.7, -0.5	48.4	24.2±0.3	10.0±0.3	10.0±0.3	24.5	35.8	18.2±0.3	
EE-35C	35.0±0.7, -0.5	48.4	24.2±0.3	11.7±0.3	10.0±0.3	24.5	35.8	18.2±0.3	
EE-40E	40.0±0.6	33.5	16.75±0.3	11.65±0.35	11.65±0.35	26.8	20.7	10.65±0.3	
EE-40A	40.0±0.7, -0.5	34.0	17.0±0.3	10.7±0.3	10.7±0.3	27.5	20.0	10.3±0.3	
EE-40S	40.0±0.7, -0.5	34.0	17.0±0.3	11.7±0.3	10.7±0.3	27.5	20.0	10.3±0.3	
EE-40B	40.0±0.9, -0.6	54.6	27.3±0.3	11.7±0.3	11.7±0.3	27.0	39.8	20.3±0.4	
EE-40H	40.0±0.9, -0.6	55.3	27.65±0.3	11.7±0.3	11.7±0.3	27.0	40.4	20.6±0.4	
EE-40.6M	40.64±0.81	32.96	16.48±0.13	12.45±0.25	12.45±0.25	28.5	20.68	10.54±0.2	
EE-42A	42.0±0.9, -0.7	42.0	21.0±0.3	15.0±0.4	12.0±0.3	29.5	29.6	15.1±0.3	
EE-42B	42.0±0.9, -0.7	42.0	21.0±0.3	19.6±0.4	12.0±0.3	29.5	29.6	15.1±0.3	
EE-44E	44.0±0.6	37.6	18.8±0.2	15.0±0.25	11.7±0.25	31.0	23.2	11.8±0.2	
EE-44	44.0±0.9, -0.6	60.6	30.3±0.4	15.0±0.4	11.7±0.3	31.2	45.8	23.3±0.4	
EE-50A	50.0±1.0, -0.7	42.6	21.3±0.3	14.6±0.4	14.6±0.4	34.3	25.0	12.8±0.3	
EE-50B	50.0±0.7	66.6	33.3±0.4	14.6±0.4	14.6±0.4	34.3	48.8	24.8±0.4	
EE-55	55.0±1.1, -0.8	55.0	27.5±0.4	20.7±0.4	17.0±0.4	37.2	37.0	18.9±0.4	
EE-60A	60.0±1.1, -0.8	44.6	22.3±0.3	15.6±0.4	15.6±0.4	43.7	27.4	14.0±0.3	
EE-60B	60.0±1.2, -0.8	72.0	36.0±0.5	15.6±0.4	15.6±0.4	43.7	55.0	28.0±0.5	
EE-65K	65.0±1.5, -1.2	65.0	32.5±0.3	26.9±0.5	19.65±0.35	44.2	44.4	22.6±0.4	
EE-70K	70.0±0.8	77.7	38.85±0.35	15.6±0.4	15.6±0.4	54.1	61.0	30.85±0.35	
EE-80K	79.3±1.6	75.0	37.5±0.5	19.8±0.4	19.75±0.25	59.4	56.0	28.3±0.3	

製品をより正しく、安全にご使用いただくために、さらに詳細な特性・仕様をご確認いただける納入仕様書をぜひご請求ください。  
記載内容は、改良その他により予告なく変更する場合がありますので、あらかじめご了承ください。

# FERRITE CORES FOR POWER SUPPLY

EEコア  
EE Cores

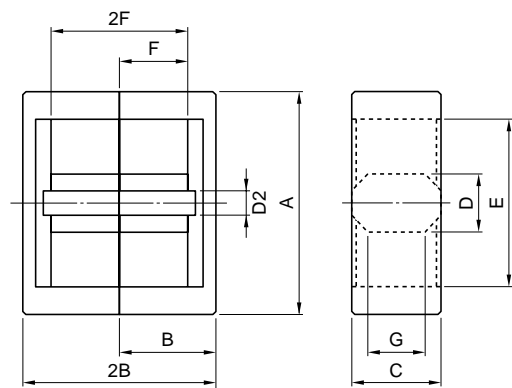


形状 Type	AL value(nH/N <sup>2</sup> )±25%				コア定数 Core parameters					Weight (g/set)
	MB1	MB3	MB4	MBT1	Cl(mm <sup>-1</sup> )	Le(mm)	Ae(mm <sup>2</sup> )	Amin(mm <sup>2</sup> )	Ve(mm <sup>3</sup> )	
EE-8.3	649	750	750	927	2.82	19.5	6.92	6.48	135	0.7
EE-10.2	825	950	950	1190	2.27	26.1	11.5	11.3	301	1.5
EE-12.5	910	1100	1100	1330	2.10	31.4	14.9	12.0	469	2.8
EE-12.5T	1250	1500	1500	1760	1.42	21.6	15.2	12.0	328	1.9
EE-13D	1060	1200	1200	1530	1.77	30.2	17.1	16.9	517	2.6
EE-14L	620	730	730	900	3.12	52.1	16.7	15.0	870	4.7
EE-16A	1050	1300	1300	1540	1.83	35.1	19.2	19.2	674	3.5
EE-16B	734	900	900	1120	2.87	55.1	19.2	19.2	1060	5.3
EE-16K	1080	1260	1260	1530	1.67	36.7	21.9	21.6	805	4.1
EE-16L	462	500	500	713	4.64	51.8	11.2	11.0	577	3.0
EE-19A	1140	1400	1400	1670	1.73	39.7	23.0	22.5	912	4.7
EE-19B	791	900	900	1210	2.69	61.3	22.8	22.5	1400	7.1
EE-19K	2280	2300	2300	3020	0.911	39.6	43.5	42.1	1730	8.9
EE-20K	790	940	940	1180	2.52	61.8	24.5	22.8	1520	7.8
EE-20L	795	950	950	1200	2.58	63.2	24.5	22.8	1550	8.0
EE-20N	1360	1500	1500	2020	1.46	46.2	31.7	31.1	1460	7.6
EE-22A	1730	1900	1900	2530	1.12	42.1	37.5	33.6	1580	8.6
EE-22B	1210	1500	1500	1850	1.73	62.8	36.3	33.6	2280	12.1
EE-22E	1070	1300	1300	1600	1.89	65.5	34.6	31.4	2260	12.1
EE-22K	1150	1400	1400	1750	1.84	63.6	34.6	32.2	2200	11.7
EE-25S	1630	1870	1870	2430	1.22	49.7	40.6	37.8	2020	10.5
EE-25D	1210	1500	1500	1820	1.70	72.0	42.3	40.5	3050	15.6
EE-25K	1610	2000	2000	2400	1.23	48.2	39.1	38.4	1880	9.7
EE-25M	1760	2090	2090	2600	1.12	57.7	51.7	51.1	2990	15.4
EE-25.4A	1650	1850	1850	2450	1.20	48.1	40.1	39.4	1930	10.0
EE-25.4B	1160	1500	1500	1790	1.84	74.1	40.2	39.4	2980	15.1
EE-27K	1840	2220	2220	2800	1.13	76.8	68.0	68.0	5220	26.7
EE-28S	3450	4080	4080	5060	0.565	49.3	87.3	77.0	4310	23.2
EE-28R	3040	3800	3800	4540	0.661	57.6	87.2	76.3	5020	27.0
EE-28	2490	3200	3200	3800	0.844	73.6	87.2	77.0	6420	34.1
EE-30A	3780	4410	4410	5630	0.530	58.0	109	107	6350	33.5
EE-30L	1910	2210	2210	2900	1.09	65.3	60.1	49.0	3930	22.3
EE-30B	2630	3170	3170	4070	0.823	90.4	110	107	9930	51.1
EE-33A	3660	4400	4400	5470	0.552	65.6	119	114	7800	40.6
EE-33K	3590	4300	4300	5410	0.574	67.2	117	114	7870	40.9
EE-33B	2490	3000	3000	3890	0.884	104	118	107	12300	62.7
EE-34.3M	2390	2860	2860	3600	0.854	69.4	81.3	77.2	5640	29.3
EE-35K	3750	4400	4400	5670	0.550	68.3	124	118	8490	45.1
EE-35A	3140	4000	4000	4760	0.662	69.9	106	100	7380	39.2
EE-35B	2180	2700	2700	3420	1.01	105	104	100	10800	56.3
EE-35C	2550	3200	3200	3990	0.863	105	121	117	12700	65.8
EE-40E	3870	4500	4500	5900	0.544	77.2	142	136	11000	57.6
EE-40A	3470	3960	3960	5290	0.608	77.4	127	114	9860	52.6
EE-40S	3750	4800	4800	5690	0.556	77.4	139	125	10700	57.5
EE-40B	2760	3500	3500	4340	0.808	117	145	137	17000	88.2
EE-40H	2730	3190	3190	4300	0.816	118	145	137	17200	89.3
EE-40.6M	4000	4790	4790	6070	0.521	77.5	149	144	11500	60.3
EE-42A	4000	5200	5200	6210	0.542	97.1	179	177	17400	89.7
EE-42B	5220	6500	6500	8080	0.415	97.1	234	231	22700	117
EE-44E	4660	5600	5600	7170	0.458	87.1	190	176	16600	87.4
EE-44	3130	4000	4000	4950	0.721	133	185	176	24600	127
EE-50A	5070	6400	6400	7850	0.427	96.3	226	213	21700	115
EE-50B	3490	4400	4400	5560	0.649	144	222	213	32000	166
EE-55	6360	8000	8000		0.350	123	353	352	43600	226
EE-60A	4960	6500	6500		0.443	110	248	242	27300	143
EE-60B	3390	4300	4300		0.678	166	244	242	40500	207
EE-65K		10000	10000		0.276	147	533	529	78300	406
EE-70K		3670	3670		0.774	187	242	236	45300	230
EE-80K		5750	5750		0.492	184	373	364	68500	351

Specifications which provide more details for the proper and safe use of the described product are available upon request.  
All specifications are subject to change without notice.

## 形状・寸法／特性

Shapes and dimensions/Characteristics

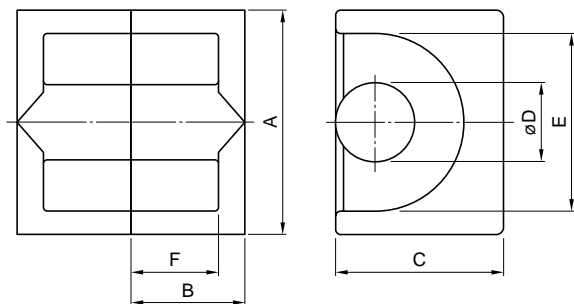


形状 Type	寸法 Dimensions(mm)									
	A	2B	B	C	D	D2	E min.	2F min.	F	G
EEH-22L	22.0±0.4	19.2	9.60±0.20	9.00±0.20	6.50±0.15	2.45	16.0	13.2	6.80±0.20	5.35
EEH-22K	22.0±0.4	29.0	14.5±0.2	9.00±0.20	6.50±0.15	2.45	16.0	23.0	11.7±0.2	5.35
EEH-28A	28.0±0.4	20.4	10.2±0.15	11.9±0.2	8.50±0.15	2.76	20.7	13.2	6.80±0.20	6.55
EEH-29M	29.3±0.4	18.2	9.10±0.20	12.05±0.25	8.50±0.15	3.5	21.6	10.6	5.50±0.20	7.2
EEH-29L	29.3±0.4	21.8	10.9±0.2	12.05±0.25	8.50±0.15	3.5	21.7	14.2	7.30±0.20	7.2
EEH-29K	29.3±0.4	29.2	14.6±0.2	12.05±0.25	8.50±0.15	3.5	21.7	21.6	11.0±0.2	7.2
EEH-29N	29.3±0.4	29.6	14.8±0.2	12.05±0.25	8.50±0.20	3.5	21.6	22.0	11.2±0.2	7.2
EEH-33A	33.0±0.5	25.0	12.5±0.2	11.85±0.25	8.35±0.30	2.9	25.5	17.5	8.93±0.18	7.3
EEH-33K	33.0±0.5	33.4	16.7±0.2	13.0±0.3	10.5±0.3	3.0	23.5	24.7	12.5±0.15	7.5

形状 Type	AL value(nH/N <sup>2</sup> )±25%				コア定数 Core parameters					Weight (g/set)
	MB1	MB3	MB4	MBT1	Ci(mm <sup>-1</sup> )	Le(mm)	Ae(mm <sup>2</sup> )	Amin(mm <sup>2</sup> )	Ve(mm <sup>3</sup> )	
EEH-22L	2210	2450	2450	3200	0.857	42.5	49.7	49.2	2110	12.0
EEH-22K	1640	1900	1900	2470	1.25	62.1	49.7	49.2	3090	16.8
EEH-28A	3330	3930	3930	4850	0.572	46.6	81.4	80.2	3790	22.0
EEH-29M	3770	4430	4430	5430	0.493	42.4	86.1	84.8	3660	21.6
EEH-29L	3360	3500	3500	4910	0.576	49.6	86.2	84.8	4280	24.7
EEH-29K	2740	3000	3000	4110	0.746	64.4	86.4	84.8	5570	31.0
EEH-29N	2710	3000	3000	4080	0.755	65.2	86.4	84.8	5640	31.3
EEH-33A	2790	3100	3100	4170	0.721	60.0	83.2	80.9	5000	28.1
EEH-33K	3250	3860	3860	4930	0.638	72.2	113	109	8180	45.8

## 形状・寸法／特性

Shapes and dimensions/Characteristics



形状 Type	通称 Alias	寸法 Dimensions(mm)							
		A	2B	B	C	øD	E	2F min.	F
EEP-7D	EP7	9.20±0.20	7.40	3.70±0.05	6.35±0.15	3.30±0.10	7.40±0.20	5.00	2.60±0.10
EEP-10D	EP10	11.5±0.3	10.2	5.10±0.10	7.65±0.20	3.30±0.15	9.40±0.20	7.20	3.70±0.10
EEP-13D	EP13	12.5±0.3	12.85	6.425±0.075	8.80±0.20	4.35±0.15	10.0±0.3	9.00	4.60±0.10
EEP-17D	EP17	18.0±0.4	16.8	8.40±0.10	11.0±0.25	5.68±0.18	12.0±0.4	11.0	5.65±0.15
EEP-20D	EP20	24.0±0.5	21.4	10.7±0.1	14.95±0.35	8.75±0.25	16.5±0.4	14.0	7.15±0.15

形状 Type	通称 Alias	AL value(nH/N <sup>2</sup> )±25%					コア定数 Core parameters					Weight (g/set)
		MB3	MB4	MA055* <sup>1</sup>	MA100* <sup>1,2</sup>	MA150* <sup>1,2</sup>	C <sub>i</sub> (mm <sup>-1</sup> )	Le(mm)	Ae(mm <sup>2</sup> )	Amin(mm <sup>2</sup> )	Ve(mm <sup>3</sup> )	
EEP-7D	EP7	1220	1220	1750	4120min.	5290min.	1.42	15.2	10.7	8.55	164	1.5
EEP-10D	EP10	1140	1140	1690	3760min.	4920min.	1.66	18.8	11.3	8.55	214	2.8
EEP-13D	EP13	1600	1600	2420	5440min.	7280min.	1.21	23.7	19.6	14.9	463	4.7
EEP-17D	EP17	2420	2420	3670	8330min.	11200min.	0.816	27.7	33.9	25.3	939	12.3
EEP-20D	EP20	4320	4320	6850	14700min.	20300min.	0.493	38.8	78.7	60.1	3060	29.2

\*<sup>1</sup>See page 26 for material characteristics.\*<sup>2</sup>Mirror like surface lapping.

## 形状・寸法／特性

Shapes and dimensions/Characteristics

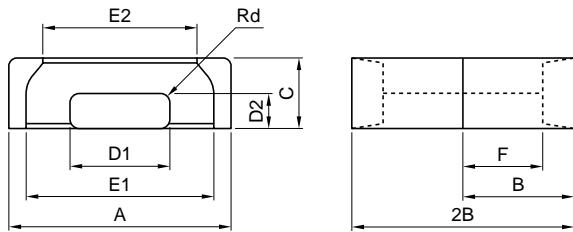


Fig.1

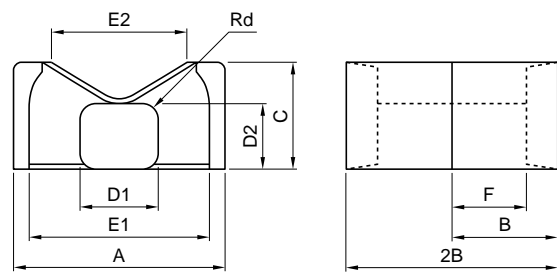


Fig.3

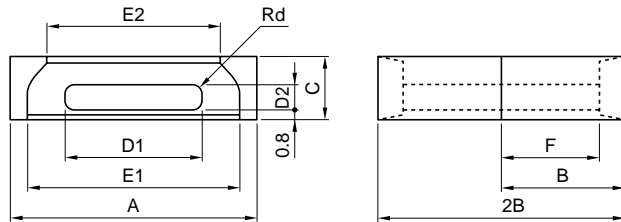


Fig.2



形状 Type	寸法 Dimensions(mm)											Bobbin Core	
	A	2B	B	C	D1	D2	E1 min.	E2 min.	2F min.	F	Rd	Fig.	Fig.
EEPA-9A	9.00±0.20	7.3	3.65±0.10	3.30±0.125	4.25±0.10	2.075±0.125	6.50	5.50	4.30	2.25±0.10	0.4	1 SMD	1
EEPA-10A	10.2±0.2	8.1	4.05±0.15	3.40±0.15	5.00±0.15	1.90±0.10	7.60	6.30	5.10	2.65±0.10	0.7		1
EEPA-13A	13.3±0.25	13.2	6.60±0.20	4.60±0.15	5.60±0.15	2.10±0.10	10.5	8.30	8.80	4.50±0.10	0.7		1
EEPA-17A	17.6±0.3	17.2	8.60±0.20	6.00±0.15	7.70±0.15	2.80±0.10	14.5	11.5	11.8	6.05±0.15	1.0		1
EEPA-19A	19.1±0.35	19.6	9.80±0.20	6.00±0.15	8.40±0.15	2.50±0.10	15.8	13.1	14.2	7.25±0.15	0.9	3	1
EEPA-25A	25.1±0.4	25.0	12.5±0.25	8.00±0.15	11.4±0.2	4.00±0.15	20.65	17.1	17.7	9.00±0.15	1.4	3	1
EEPA-25B	25.0±0.4	22.8	11.4±0.2	6.50±0.15	13.8±0.2	2.50±0.10	20.3	18.2	17.2	8.75±0.15	0.8	2 SMD	2
EEPA-25C	25.0±0.4	22.8	11.4±0.2	12.0±0.2	9.00±0.15	7.50±0.15	18.7	14.0	16.1	8.20±0.15	2.5		3
EEPA-25D	25.0±0.4	30.5	15.3±0.25	12.0±0.2	9.00±0.15	7.50±0.15	18.7	14.0	23.8	12.05±0.15	2.5		3
EEPA-26T	25.8±0.4	29.4	14.7±0.25	8.50±0.15	11.8±0.2	4.50±0.15	20.4	17.2	21.7	11.0±0.15	1.5	3	1
EEPA-27A	27.1±0.45	32.0	16.0±0.25	8.00±0.15	13.0±0.2	4.00±0.15	21.7	18.5	23.7	12.0±0.15	1.4	3	1
EEPA-27B	27.2±0.45	27.0	13.5±0.25	8.00±0.15	13.0±0.2	4.00±0.15	21.7	18.5	18.7	9.50±0.15	1.4		1
EEPA-30A	30.1±0.45	35.0	17.5±0.25	8.00±0.15	15.0±0.2	4.00±0.15	23.6	20.0	25.7	13.0±0.15	1.4		1
EEPA-33B	33.0±0.5	33.0	16.5±0.25	10.0±0.2	15.0±0.2	6.00±0.15	24.5	21.8	21.7	11.0±0.15	2.0		1

形状 Type	AL value(nH/N <sup>2</sup> )±25%					コア定数 Core parameters					Weight (g/set)
	MB1	MB3	MB4	MBT1	MC2	C <sub>1</sub> (mm <sup>-1</sup> )	Le(mm)	Ae(mm <sup>2</sup> )	Amin(mm <sup>2</sup> )	Ve(mm <sup>3</sup> )	
EEPA-9A	926	1070	1070	1270	664	1.79	15.5	8.67	8.48	134	0.77
EEPA-10A	881	1020	1020	1230	624	1.96	18.1	9.22	9.08	167	0.94
EEPA-13A	912	1080	1080	1320	630	2.06	28.3	13.7	11.3	388	2.4
EEPA-17A	1160	1110	1110	1700	793	1.67	38.4	22.9	20.7	879	5.1
EEPA-19A	1030	1160	1160	1530	696	1.95	44.5	22.8	20.3	1010	5.9
EEPA-25A	1640	1890	1890	2460	1100	1.24	55.7	44.8	41.0	2490	14.3
EEPA-25B	1260	1390	1390	1890	849	1.61	50.6	31.5	31.5	1590	9.8
EEPA-25C	2830	3350	3350	4170	1930	0.694	50.0	72.0	62.1	3600	21.2
EEPA-25D	2280	2730	2730	3450	1530	0.908	65.0	71.6	62.1	4650	26.8
EEPA-26T	1730	1930	1930	2620	1150	1.20	63.9	53.1	51.2	3390	18.9
EEPA-27A	1550	1860	1860	2380	1030	1.36	69.4	51.1	48.0	3550	19.9
EEPA-27B	1790	2140	2140	2700	1200	1.15	59.5	51.9	48.8	3080	17.6
EEPA-30A	1660	2190	2190	2550	1100	1.28	75.8	59.2	57.3	4480	25.1
EEPA-33B	2740	3280	3280	4160	1830	0.760	69.4	91.4	86.6	6350	36.4

## 形状・寸法／特性

Shapes and dimensions/Characteristics

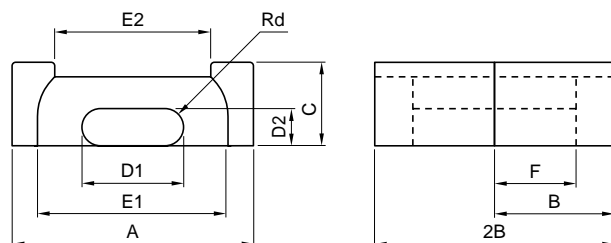


Fig.1

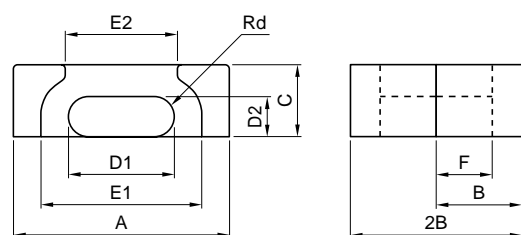


Fig.2

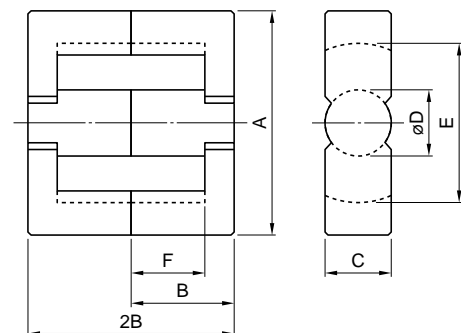


形状 Type	寸法 Dimensions(mm)											Core Fig.
	A	2B	B	C	D1	D2	E1 min.	E2 min.	2F min.	F	Rd	
EEPC-10D	10.2±0.2	8.10	4.05±0.10	3.40±0.10	5.00±0.10	1.90±0.10	7.60	5.30	5.10	2.65±0.10	0.95	2
EEPC-13D	13.3±0.3	13.2	6.60±0.20	4.60±0.15	5.60±0.15	2.05±0.10	10.5	8.30	8.60	4.50±0.20	1.03	1
EEPC-17D	17.6±0.4	17.1	8.55±0.20	6.00±0.15	7.70±0.15	2.80±0.10	14.3	11.5	11.7	6.05±0.20	1.40	1
EEPC-19D	19.1±0.5	19.5	9.75±0.20	6.00±0.15	8.50±0.15	2.50±0.10	15.8	13.1	14.1	7.25±0.20	1.25	1
EEPC-25D	25.1±0.5	25.0	12.5±0.2	8.00±0.20	11.5±0.2	4.00±0.10	20.65	17.1	17.4	9.00±0.30	2.00	1
EEPC-27D	27.1±0.5	32.0	16.0±0.2	8.00±0.20	13.0±0.3	4.00±0.10	21.6	18.5	23.4	12.0±0.3	2.00	1
EEPC-30D	30.1±0.5	35.0	17.5±0.2	8.00±0.20	15.0±0.3	4.00±0.10	23.6	20.0	25.4	13.0±0.3	2.00	1

形状 Type	AL value(nH/N <sup>2</sup> )±25%					コア定数 Core parameters					Weight (g/set)
	MB1	MB3	MB4	MBT1	MC2	C <sub>1</sub> (mm <sup>-1</sup> )	Le(mm)	Ae(mm <sup>2</sup> )	Amin(mm <sup>2</sup> )	Ve(mm <sup>3</sup> )	
EEPC-10D	648	724	724	828	492	2.05	17.8	8.73	8.73	155	1.0
EEPC-13D	687	787	787	931	497	2.34	28.1	12.1	10.6	340	2.3
EEPC-17D	1160	1110	1110	1700	793	1.83	38.2	20.9	19.9	799	4.9
EEPC-19D	1030	1160	1160	1530	696	2.11	43.5	20.6	19.9	897	5.6
EEPC-25D	1640	1890	1890	2460	1100	1.35	56.3	41.5	41.2	2340	13.7
EEPC-27D	1550	1860	1860	2380	1030	1.46	71.2	48.9	48.6	3480	19.2
EEPC-30D	1660	2190	2190	2550	1100	1.36	77.3	56.6	56.6	4380	24.4

## 形状・寸法 / 特性

Shapes and dimensions/Characteristics



形状 Type	寸法 Dimensions(mm)								EC style	Bobbin
	A	2B	B	C	øD	E min.	2F min.	F		
EER-7.5D	7.50±0.15	5.00	2.50±0.10	4.00±0.10	2.60±0.10	5.60	3.36	1.75±0.07		
EER-9.3K	9.30±0.20	4.80	2.40±0.05	4.85±0.15	3.35±0.15	7.65	3.20	1.675±0.075		
EER-9.3S	9.35±0.15	3.95	1.975±0.05	4.90±0.10	3.40±0.10	7.48	2.00	1.075±0.075		
EER-10.8K	10.8±0.2	4.90	2.45±0.10	5.90±0.10	4.38±0.13	8.70	2.96	1.58±0.10		
EER-10.8S	10.83±0.18	3.85	1.925±0.05	5.90±0.10	4.13±0.13	8.70	1.95	0.975min.		
EER-10.8D	10.83±0.2	4.90	2.45±0.10	5.90±0.10	4.13±0.13	8.70	2.95	1.575±0.10		
EER-12.4D	12.4±0.25	8.20	4.10±0.10	5.00±0.15	3.40±0.10	10.4	6.00	3.10±0.10		
EER-17.5S	17.5±0.5	16.5	8.25±0.20	5.05±0.25	5.05±0.25	13.0	12.5	6.25±0.10		
EER-24K	24.4±0.6	28.9	14.45±0.15	8.50±0.40	8.50±0.20	18.0	19.8	10.1±0.2		
EER-25.5A	25.5±0.6	18.6	9.30±0.25	7.50±0.25	7.50±0.25	19.7	11.9	6.20±0.25		
EER-25.5B	25.5±0.6	31.0	15.5±0.3	7.50±0.25	7.50±0.25	19.7	24.2	12.4±0.3		
EER-28.5U	28.5±0.6	16.7	8.35±0.20	11.4±0.3	9.90±0.30	21.1	9.00	4.65±0.15		
EER-28.5T	28.5±0.6	21.8	10.9±0.3	11.4±0.3	9.90±0.20	21.1	12.6	6.50±0.20		
EER-28.5A	28.5±0.6	28.0	14.0±0.3	11.4±0.3	9.90±0.30	21.1	18.6	9.60±0.30		
EER-28.5B	28.5±0.6	33.8	16.9±0.3	11.4±0.3	9.90±0.30	21.1	24.4	12.5±0.3		
EER-30M	29.8±0.8	31.6	15.8±0.4	9.50±0.40	9.50±0.30	21.9	21.4	11.0±0.3		
EER-33S	33.0±0.5	26.0	13.0±0.2	14.0±0.25	12.5±0.25	24.7	16.5	8.50±0.25		
EER-33K	33.0±0.5	34.0	17.0±0.2	14.0±0.25	12.5±0.25	24.7	24.5	12.5±0.25		
EER-34.2	34.2±0.8	34.6	17.3±0.3	10.8±0.3	10.8±0.3	25.6	23.6	12.1±0.3		
EER-35H	35.0±0.7	33.6	16.8±0.3	11.3±0.3	11.3±0.3	25.6	21.0	10.8±0.3		
EER-35A	35.0±0.8	41.4	20.7±0.3	11.3±0.3	11.3±0.3	25.3	28.8	14.7±0.3		
EER-35B	35.0±0.9	48.8	24.4±0.4	11.3±0.3	11.3±0.3	25.2	36.0	18.4±0.4		
EER-39J	39.0±0.7	44.4	22.2±0.3	12.8±0.3	12.8±0.3	28.6	33.5	17.0±0.25		
EER-39.1	39.1±0.8	39.6	19.8±0.3	12.5±0.3	12.5±0.3	29.3	28.6	14.6±0.3		
EER-40H	40.0±0.5	42.3	21.15±0.2	15.0±0.2	14.0±0.25	30.7	29.9	15.15±0.2		
EER-40D	40.0±0.5	44.8	22.4±0.2	13.3±0.25	13.3±0.25	29.0	30.3	15.4±0.25		
EER-40	40.0±0.5	54.6	27.3±0.2	13.3±0.25	13.3±0.25	29.0	40.0	20.3±0.3		
EER-42	42.0±0.8	42.4	21.2±0.2	15.2±0.4	15.2±0.2	30.1	29.8	15.3±0.4		
EER-42P	42.0±0.5	42.4	21.2±0.2	19.6±0.4	17.3±0.25	31.8	30.0	15.25±0.25		
EER-42D	42.0±0.6	44.8	22.4±0.2	15.5±0.25	15.5±0.25	29.4	30.2	15.4±0.3		
EER-44	44.0±0.8	44.6	22.3±0.4	14.8±0.4	14.8±0.4	32.5	32.2	16.5±0.4		
EER-45	45.0±1.0	48.0	24.0±0.4	14.8±0.4	14.8±0.4	32.5	32.2	16.5±0.4		
EER-48.7	48.7±1.1	49.4	24.7±0.4	16.3±0.4	16.3±0.4	36.1	35.4	18.1±0.4		
EER-49M	49.0±0.8	47.8	23.9±0.3	17.2±0.4	17.2±0.25	36.3	30.2	15.4±0.3		
EER-49L	49.0±0.8	54.0	27.0±0.3	17.2±0.4	17.2±0.25	36.4	36.4	18.5±0.3		
EER-49P	49.0±0.7	55.0	27.5±0.2	17.2±0.4	17.2±0.25	36.4	37.6	19.0±0.2		
EER-54K	54.2±0.8	49.4	24.7±0.25	18.8±0.4	18.8±0.4	40.0	33.8	17.2±0.3		
EER-90	90.0±1.8	90.0	45.0±0.65	30.0±1.0	30.0±1.0	68.5	70.0	35.5±0.5		
EER-94	94.0±1.8	95.0	47.5±0.65	30.0±1.0	30.0±1.0	68.5	70.0	35.5±0.5		

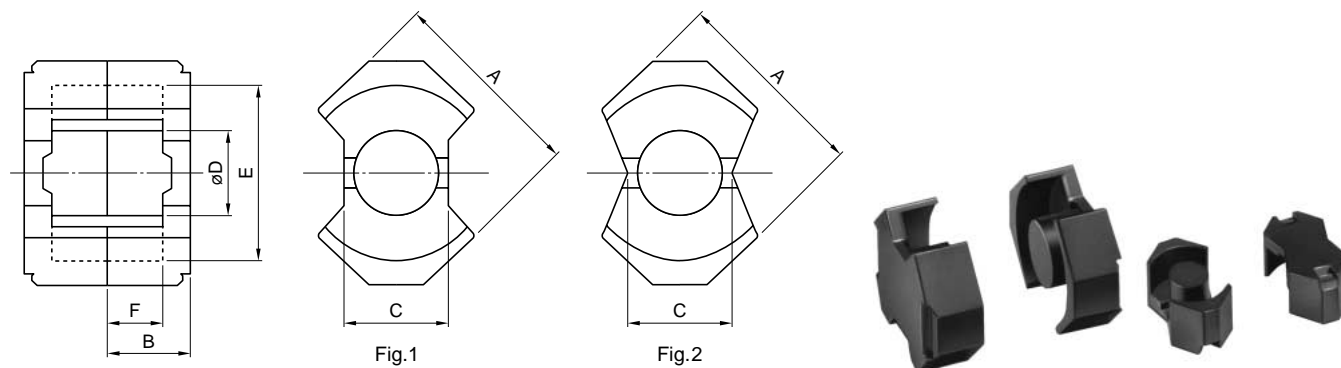


形状 Type	AL value(nH/N <sup>2</sup> )±25%				コア定数 Core parameters					Weight (g/set)
	MB1	MB3	MB4	MBT1	Ci(mm <sup>-1</sup> )	Le(mm)	Ae(mm <sup>2</sup> )	Amin(mm <sup>2</sup> )	Ve(mm <sup>3</sup> )	
EER-7.5D	735	839	839	985	2.10	12.5	5.96	5.31	74.7	0.45
EER-9.3K	840	955	955	1110	1.74	14.0	8.04	8.81	113	0.69
EER-9.3S	1080	1210	1210	1390	1.27	11.9	9.31	9.07	111	0.66
EER-10.8K	1290	1460	1460	1700	1.15	14.3	12.3	15.1	176	1.1
EER-10.8S	1340	1510	1510	1740	1.04	12.4	12.0	10.2	149	0.90
EER-10.8D	1220	1380	1380	1610	1.21	14.4	12.0	10.2	173	0.98
EER-12.4D	705	700	700	996	2.53	23.4	9.27	8.88	217	1.2
EER-17.5S	940	1100	1100	1350	1.94	40.1	20.7	20.0	830	4.38
EER-24K	1920	2260	2260	2890	1.07	62.5	58.5	53.7	3660	19.8
EER-25.5A	1810	2000	2000	2670	1.08	47.6	44.2	42.4	2100	11.0
EER-25.5B	1280	1500	1500	1960	1.65	72.4	43.8	42.4	3170	16.3
EER-28.5U	3580	4170	4170	5160	0.524	42.9	81.9	77.0	3510	19.2
EER-28.5T	3300	3890	3890	4810	0.579	50.8	87.7	77.0	4450	25.5
EER-28.5A	2740	3270	3270	4120	0.744	63.4	85.2	77.0	5400	29.3
EER-28.5B	2370	2850	2850	3620	0.887	74.9	84.5	77.0	6340	34.0
EER-30M	2220	2650	2650	3340	0.925	70.7	76.4	70.9	5400	28.9
EER-33S	3990	4800	4800	5970	0.506	62.0	123	121	7610	40.6
EER-33K	3300	4200	4200	5040	0.637	78.0	122	121	9560	50.1
EER-34.2	2580	3200	3200	3950	0.820	79.2	96.6	91.6	7660	40.4
EER-35H	3090	3700	3700	4700	0.678	75.1	111	100	8310	45.1
EER-35A	2620	3300	3300	4050	0.822	90.4	110	100	9940	53.4
EER-35B	2280	2800	2800	3570	0.963	105	109	100	11500	60.9
EER-39J	2850	3500	3500	4440	0.766	102	133	129	13500	69.8
EER-39.1	2880	3480	3480	4470	0.749	92.9	124	123	11500	59.9
EER-40H	3530	4000	4000	5470	0.613	96.1	157	147	15000	79.9
EER-40D	3400	4300	4300	5280	0.638	97.5	153	139	14900	80.3
EER-40	2870	3490	3490	4520	0.773	117	151	139	17700	94.3
EER-42	4080	5200	5200	6320	0.531	96.6	182	178	17600	91.9
EER-42P	5150	6300	6300	7960	0.419	96.0	229	222	22000	116
EER-42D	4450	5200	5200	6890	0.487	97.8	201	189	19600	104
EER-44	3810	4400	4400	5930	0.573	103	179	169	18400	96.8
EER-45	3930	4760	4760	6130	0.558	106	190	172	20100	108
EER-48.7	4330	5260	5260	6780	0.509	113	221	209	24900	132
EER-49M	5090	6500	6500	7920	0.429	105	245	230	25900	140
EER-49L	4500	5570	5570	7070	0.493	119	241	225	28500	153
EER-49P	4430	5380	5380	6970	0.501	121	240	225	29000	155
EER-54K	5350	6000	6000		0.412	115	280	278	32200	169
EER-90	6720	8250	8250		0.347	215	619	559	133000	698
EER-94	7490	9210	9210		0.312	222	712	707	158000	819



## 形状・寸法／特性

Shapes and dimensions/Characteristics



形状 Type	通称 Alias	寸法 Dimensions(mm)								Fig
		A	2B	B	C	øD	E	2F min.	F	
EERM-4A	RM4	9.60±0.20	10.4	5.20±0.05	4.40±0.20	3.80±0.10	8.15±0.20	6.9	3.60±0.10	1
EERM-5A	RM5	12.05±0.25	10.4	5.20±0.05	6.60±0.20	4.80±0.10	10.4±0.2	6.3	3.25±0.10	1
EERM-6B	RM6	14.4±0.3	12.4	6.20±0.05	7.90±0.30	6.25±0.15	12.65±0.25	8.0	4.10±0.10	2
EERM-8A	RM8	19.3±0.4	16.4	8.20±0.10	10.5±0.5	8.40±0.15	17.35±0.35	10.76	5.53±0.15	1
EERM-10A	RM10	24.15±0.55	18.6	9.30±0.10	12.9±0.6	10.7±0.2	21.65±0.45	12.4	6.35±0.15	1
EERM-12A	RM12	29.25±0.55	23.4	11.7±0.2	15.5±0.8	12.55±0.25	25.5±0.5	16.8	8.55±0.15	1
EERM-14A	RM14	34.1±0.6	28.9	14.45±0.1	18.0±1.0	14.7±0.3	29.6±0.6	20.8	10.55±0.15	1

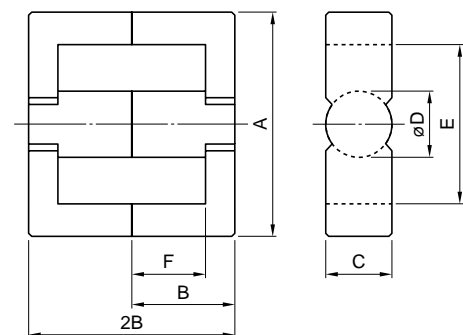
形状 Type	通称 Alias	AL value(nH/N <sup>2</sup> )±25%					コア定数 Core parameters					Weight (g/set)
		MB3	MB4	MA055*1	MA100*1,*2	MA150*1,*2	C <sub>l</sub> (mm <sup>-1</sup> )	Le(mm)	Ae(mm <sup>2</sup> )	Amin(mm <sup>2</sup> )	Ve(mm <sup>3</sup> )	
EERM-4A	RM4	1190	1190	1810	3920min.	5210min.	1.67	22.9	13.7	11.3	314	1.8
EERM-5A	RM5	1950	1950	2890	6750min.	8950min.	0.961	22.5	23.5	18.1	529	3.3
EERM-6B	RM6	2460	2460	3770	8470min.	11400min.	0.810	28.8	35.6	30.7	1030	5.6
EERM-8A	RM8	3480	3480	5540	11800min.	16200min.	0.615	38.5	62.5	55.4	2400	13.1
EERM-10A	RM10	4820	4820	7830	16200min.	22500min.	0.460	45.1	98.0	89.9	4420	23.7
EERM-12A	RM12	5790	5790	9720	19000min.	26800min.	0.403	55.7	138	124	7690	45.0
EERM-14A	RM14	6590	6590	11400	21200min.	30100min.	0.371	69.1	186	170	12900	71.5

\*1See page 26 for material characteristics.

\*2Mirror like surface lapping.

## 形状・寸法 / 特性

Shapes and dimensions/Characteristics

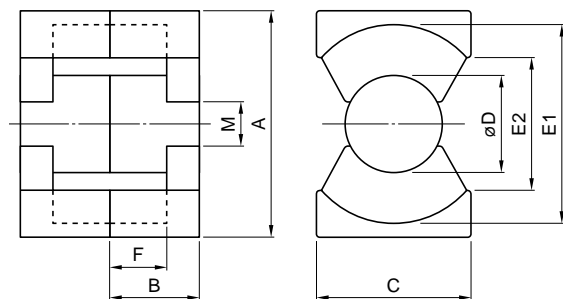


形状	寸法 Dimensions(mm)							
Type	A	2B	B	C	øD	E min.	2F min.	F
EERS-16K	16.3±0.4	15.0	7.50±0.20	5.00±0.30	4.93±0.23	11.5	10.3	5.35±0.20
EERS-22K	22.0±0.4	22.5	11.25±0.3	6.65±0.25	6.65±0.25	15.5	14.2	7.25±0.15
EERS-22D	22.0±0.3	29.4	14.7±0.15	6.65±0.15	6.65±0.10	15.5	21.1	10.7±0.15
EERS-35K	35.35±0.35	33.6	16.8±0.25	11.3±0.15	11.3±0.25	26.0	21.2	10.8±0.2

形状	AL value(nH/N <sup>2</sup> )±25%				コア定数 Core parameters					Weight
Type	MB1	MB3	MB4	MBT1	C <sub>1</sub> (mm <sup>-1</sup> )	Le(mm)	A <sub>e</sub> (mm <sup>2</sup> )	A <sub>min</sub> (mm <sup>2</sup> )	Ve(mm <sup>3</sup> )	(g/set)
EERS-16K	1090	1250	1250	1580	1.73	35.6	20.6	19.1	732	3.9
EERS-22K	1610	1900	1900	2380	1.22	49.1	40.1	34.7	1970	10.9
EERS-22D	1300	1500	1500	1960	1.60	62.8	39.3	34.7	2470	13.5
EERS-35K	3010	3610	3610	4580	0.695	75.6	109	100	8220	44.7

## 形状・寸法 / 特性

Shapes and dimensions/Characteristics

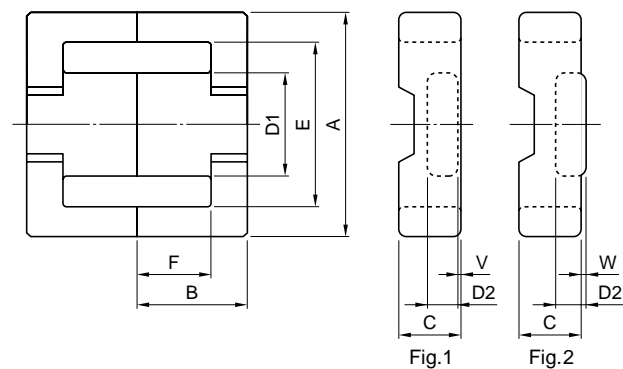


形状 Type	通称 Alias	寸法 Dimensions(mm)									
		A	2B	B	C	φD	E1	E2 min.	2F min.	F	M min.
EERX-20A	PQ2016	20.5±0.4	16.2	8.10±0.10	14.0±0.4	8.80±0.20	18.0±0.4	12.0	10.0	5.15±0.15	4.0
EERX-20B	PQ2020	20.5±0.4	20.2	10.1±0.1	14.0±0.4	8.80±0.20	18.0±0.4	12.0	14.0	7.15±0.15	4.0
EERX-26A	PQ2620	26.5±0.45	20.14	10.07±0.13	19.0±0.45	12.0±0.2	22.5±0.45	15.5	11.2	5.75±0.15	6.0
EERX-26B	PQ2625	26.5±0.45	24.74	12.37±0.13	19.0±0.45	12.0±0.2	22.5±0.45	15.5	15.8	8.05±0.15	6.0
EERX-32A	PQ3220	32.0±0.5	20.54	10.27±0.13	22.0±0.5	13.45±0.25	27.5±0.5	19.0	11.2	5.75±0.15	5.5
EERX-32B	PQ3230	32.0±0.5	30.34	15.17±0.13	22.0±0.5	13.45±0.25	27.5±0.5	19.0	21.0	10.65±0.15	5.5
EERX-35A	PQ3535	35.1±0.6	34.74	17.37±0.13	26.0±0.5	14.35±0.25	32.0±0.5	23.5	24.7	12.5±0.15	6.0
EERX-40A	PQ4040	40.5±0.9	39.74	19.87±0.13	28.0±0.6	14.9±0.3	37.0±0.6	28.0	29.2	14.75±0.15	6.3
EERX-50A	PQ5050	50.0±0.7	49.95	24.98±0.13	32.0±0.6	20.0±0.35	44.0±0.7	31.5	35.8	18.05±0.15	6.0

形状 Type	通称 Alias	AL value(nH/N <sup>2</sup> )±25%				コア定数 Core parameters					Weight (g/set)
		MB1	MB3	MB4	MBT1	C <sub>1</sub> (mm <sup>-1</sup> )	Le(mm)	Ae(mm <sup>2</sup> )	Amin(mm <sup>2</sup> )	Ve(mm <sup>3</sup> )	
EERX-20A	PQ2016	3300	3880	3880	4900	0.610	37.4	62.0	60.8	2320	13
EERX-20B	PQ2020	2690	3150	3150	3960	0.740	45.4	62.0	60.8	2820	15
EERX-26A	PQ2620	4800	5630	5630	6920	0.390	46.3	119	113	5510	31
EERX-26B	PQ2625	4150	4920	4920	6110	0.470	55.5	118	113	6550	36
EERX-32A	PQ3220	6260	7310	7310	9360	0.330	55.5	170	142	9440	42
EERX-32B	PQ3230	4290	5140	5140	6370	0.460	74.6	161	142	12000	55
EERX-35A	PQ3535	4150	4860	4860	5980	0.450	87.9	196	162	17200	73
EERX-40A	PQ4040	3680	4300	4300	5310	0.510	102	201	174	20500	95
EERX-50A	PQ5050	5670	6720	6720	8330	0.344	113	328	314	37100	195

## 形状・寸法／特性

Shapes and dimensions/Characteristics



形状	寸法 Dimensions(mm)										Fig.	
Type	A	2B	B	C	D1	D2	E min.	2F min.	F	V		W
EES-15A	15.0±0.3	15.0	7.50±0.20	4.65±0.20	5.30±0.20	2.40±0.15	10.6	10.6	5.50±0.20		0.20	2
EES-20A	20.0±0.4	20.0	10.0±0.25	6.70±0.30	8.90±0.25	3.50±0.20	15.1	14.9	7.70±0.25	0.15		1
EES-25A	24.7±0.65	25.0	12.5±0.25	9.70±0.20	11.4±0.2	5.20±0.15	18.1	18.1	9.30±0.25	0.50		1
EES-30A	30.0±0.8	30.0	15.0±0.25	9.20±0.20	14.6±0.25	4.80±0.25	21.65	21.8	11.2±0.3	0.75		1

形状	AL value(nH/N²)±25%				コア定数 Core parameters					Weight (g/set)
	MB1	MB3	MB4	MBT1	C <sub>1</sub> (mm <sup>-1</sup> )	Le(mm)	Ae(mm²)	Amin(mm²)	Ve(mm³)	
EES-15A	905	1070	1070	1330	2.14	33.6	15.7	12.7	527	3.0
EES-20A	1330	1590	1590	1990	1.50	47.6	31.7	29.5	1510	7.5
EES-25A	2140	2480	2480	3210	0.954	58.5	61.3	58.2	3590	18
EES-30A	2200	2640	2640	3350	0.951	69.7	73.3	69.9	5120	25